



POOL LIGHTING

Cut Sheet #7093

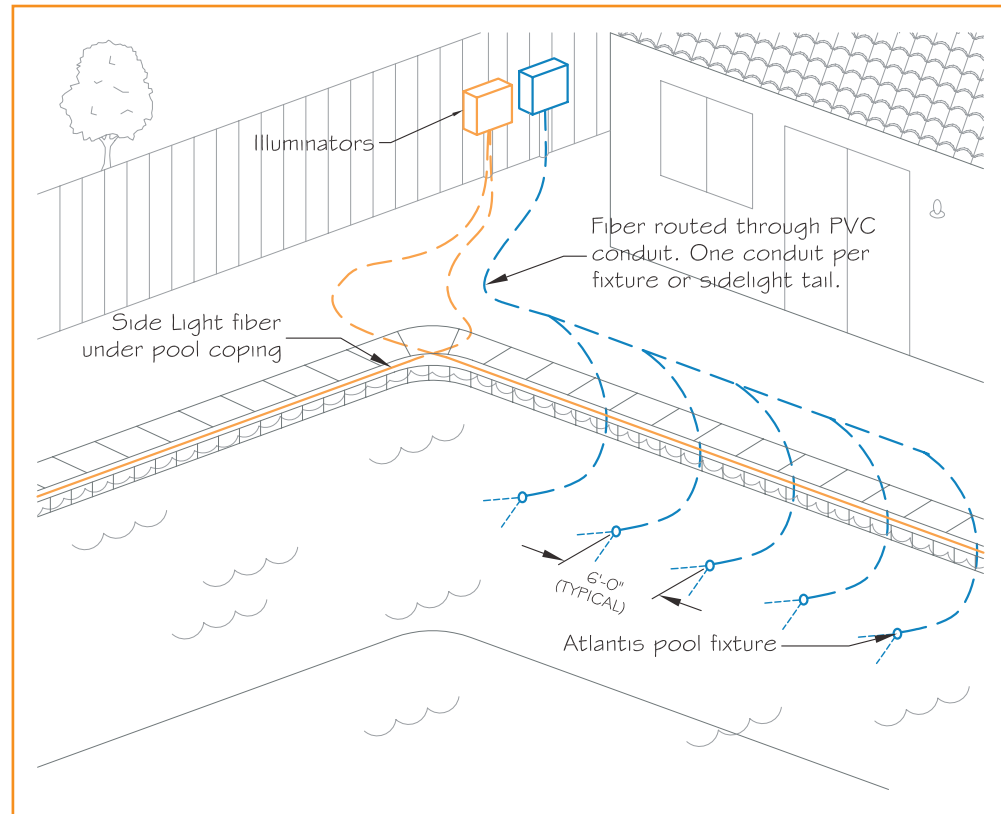
TYPICAL APPLICATION MATERIALS

UNDERWATER FIXTURES:

Illuminator:
 LGS150 Wet Location
Fiber:
 F-MF-EL-PM-8
Fixtures:
 AT-OD/MX-FX-70-PG-SS

PERIMETER LIGHTING:

Illuminator:
 LGS150 Wet Location
Fiber:
 F-MF-SL-PM-14



DESIGN CONSIDERATIONS

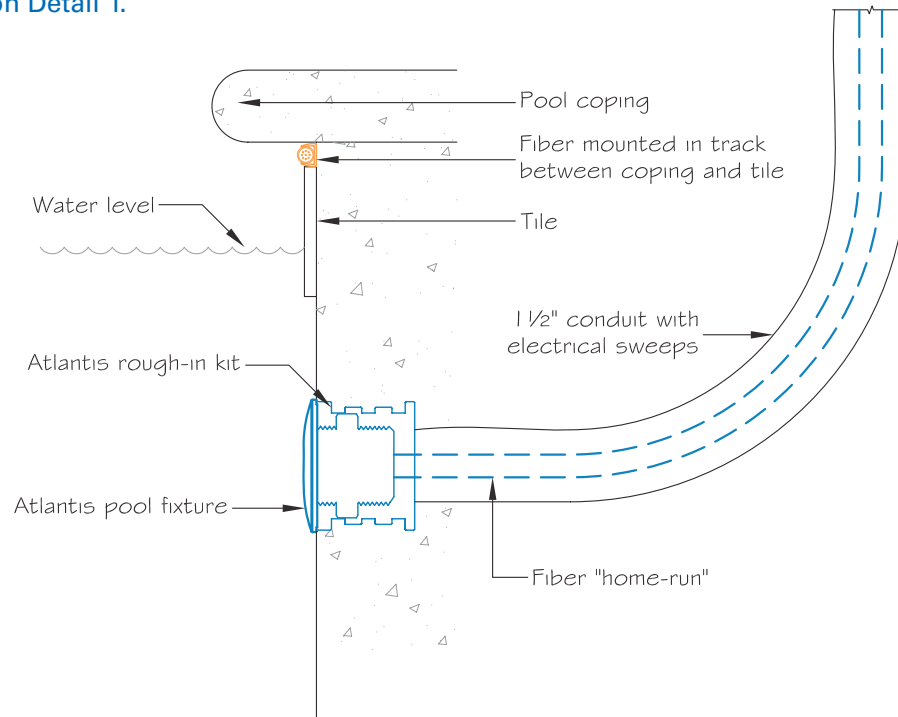
- Pool lighting can incorporate one or both of the methods shown here. Underwater lighting provides a more traditional effect with the added benefit of color changing capabilities and zero underwater maintenance. Perimeter lighting adds a dramatic flare and the safety of a lit border.
- Due to the narrower beam spread, more underwater fixtures will be required than with traditional pool lighting. Atlantis fixtures should be mounted on approx. 6' centers along one of the long walls of the pool. To avoid glare, mount fixtures only on the pool wall hidden from the house or main viewpoint.
- Spas will require between 2 and 5 Atlantis fixtures, depending on size. Fixtures should be spaced evenly around the spa. Spas can typically use smaller fiber than pools.
- Up to 13 Atlantis fixtures can be lit from one illuminator when using 8mm fiber. 6mm fiber can be used in lower ambient lighting environments. 10mm fiber may be necessary for larger pools or higher light output requirements.
- To ensure that all Atlantis fixtures will have balanced light output, use a 3:2 ratio when determining fiber lengths (longest run is no more than 50% longer than the shortest run.)
- Perimeter fiber can be mounted exposed to view directly beneath the pool coping, or concealed from view within a notch in the coping. Both mounting locations will produce a reflection of the fiber on the water surface.
- Side Light fiber for perimeter lighting must be looped into the same illuminator, or for longer perimeter lengths, daisy-chained between two or more illuminators.
- When calculating fiber lengths, allow for an extra two foot service loop of cable per fiber run. This service loop will allow for slight changes in illuminator location or orientation, and also allows the cable to be re-harnessed in the future, if required.
- Color changing effects will require the use of DMX control in systems utilizing more than one illuminator.

INSTALLATION CONSIDERATIONS

- Atlantis fixtures should be mounted approximately 12" to 18" below the water line for pools. Fixtures should be mounted high on the bench face for spas.
- Fixture installation must follow factory recommendations to achieve appropriate water resistance and to adhere to stated IP rating.
- Perimeter fiber should enter and exit the pool in corners to avoid bright spots. Corners must allow for a 6" minimum bend radius to avoid additional bright spots.
- Side light fiber should be mounted using tracking, which can be secured to the surface using either stainless steel screws or an epoxy adhesive.
- 1" flexible conduit should be used to transition perimeter fiber through elevation changes.

APPLICATION

Section Detail 1.



Section Detail 2.

